



Where Friends Meet  
And Friendships Grow

Sturgeon Valley Golf & Country Club  
Membership Information  
2025

Connect with us:



[sturgeonvalleygolfclub.com](http://sturgeonvalleygolfclub.com)

# Table of Contents

<u>Welcome to Sturgeon Valley</u>	2
<u>Available Memberships</u>	3
<u>Fee Schedule</u>	10
<u>Rules and Etiquette</u>	13
<u>Pro Shop Services</u>	17
<u>Food and Beverage Services</u>	19
<u>Member Billing &amp; Payment</u>	20
<u>Membership Application</u>	21

## Operations & Administration

### **General Manager**

Jordan Dekens

[gm@svgcc.ca](mailto:gm@svgcc.ca)

780-973-2200

### **Head Professional**

Kris Zubiak

[headpro@svgcc.ca](mailto:headpro@svgcc.ca)

780-973-2204

### **Course Superintendent**

Shane Gibson

[shaneg@svgcc.ca](mailto:shaneg@svgcc.ca)

780-973-5594

### **Club Chef**

Pierre Cossette

[chef@svgcc.ca](mailto:chef@svgcc.ca)

780-973-2201

### **Food & Beverage/Event Manager**

Ralph Mazzuca

[fb@svgcc.ca](mailto:fb@svgcc.ca)

780-973-2205

### **Office Manager**

Debbie Hude

[acct@svgcc.ca](mailto:acct@svgcc.ca)

780-973-2202

**Office/Clubhouse**

Phone: 780-973-6705

Fax: 780-973-3199

**Pro Shop**

Phone: 780-973-6700

25114 Sturgeon Road

Sturgeon County, Alberta

T8T 1S6





# Welcome To Sturgeon Valley “Where Friends Meet And Friendships Grow”

Dear Golfer!

Thank you for considering the Sturgeon Valley Golf & Country Club as a place to call your “golf home”. Since 1960 we have been providing outstanding golf activities and events to our many members and guests. .

Our year round facility offers a full complement of services including the Valley Lounge & Patio dining area, golf simulator, a fully stocked golf shop staffed by PGA of Canada Professionals and a first rate practice area.

We hope that this package provides sufficient information on all that our club offers and the current rates on membership categories

At your convenience, I would be happy to arrange a tour of the club along with a hosted day of golf.

Please feel free to contact me anytime for assistance on any club queries.

*Jordan Dekens  
General Manager*



# Available Memberships



See the Fee Schedule for more details and costs.



# Shareholder

**Purchase of a share is required. Please contact administration office at 780-973-2200 or gm@svgcc.ca for information.**

**Upon obtaining a share, an entrance fee of \$7,000+gst is payable to the club. \*If paid in full.\***

**Payment terms are available, payable over 24 months**

**Full booking and playing privileges**

You will have full access to all tee times available without any restrictions.

**Use of all Clubhouse facilities**

Pro Shop, Locker Room, Valley Lounge, 10th Tee Snack Bar.

**Signing in of guests to Clubhouse facilities**

**Golf Canada Handicap services**

**Full voting rights at Annual General Meeting**



# Intermediate Shareholder

Purchase of a share is required. Please contact administration office at 780-973-2200 or gm@svgcc.ca for information.

Upon obtaining a share, an entrance fee of \$7,000+gst is payable to the club. \*If paid in full.\*

Payment terms are available, payable over 24 months.

Up to the age of 34

## Full booking and playing privileges

You will have full access to all tee times available without any restrictions.

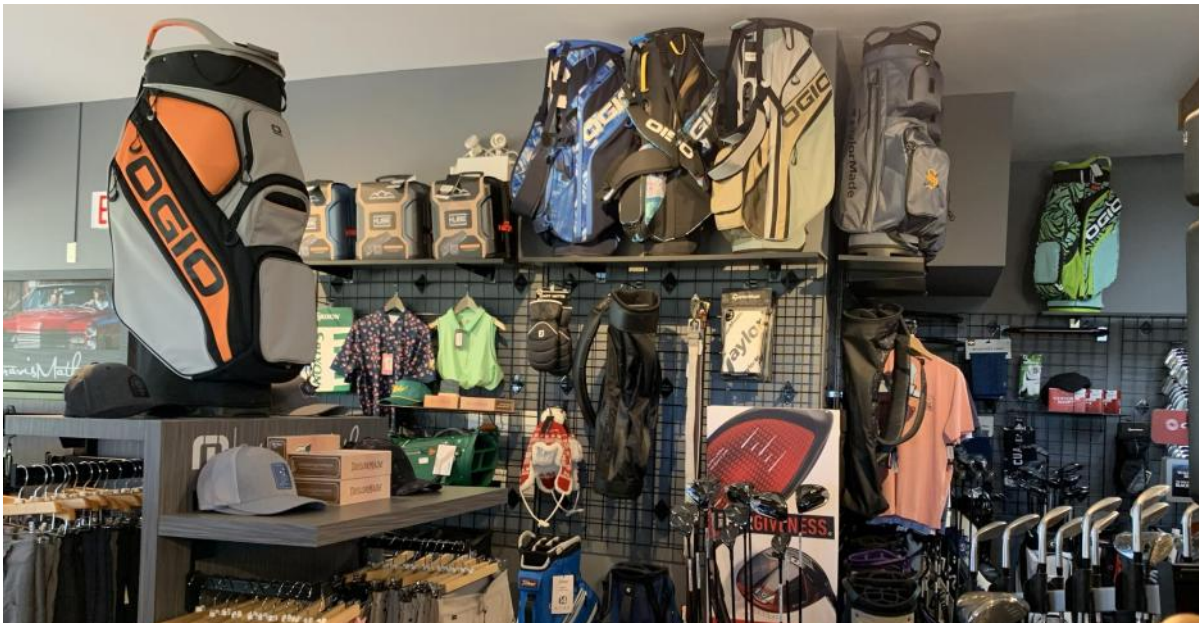
## Use of all Clubhouse facilities

Pro Shop, Locker Room, Valley Lounge, 10th Tee Snack Bar.

## Signing in of guests to Clubhouse facilities

## Golf Canada Handicap services

## Full voting rights at Annual General Meeting



# Associate

## **Full booking and playing privileges**

You will have full access to all tee times available without any restrictions.

## **Use of all Clubhouse facilities**

Pro Shop, Locker Room, Valley Lounge, 10th Tee Snack Bar.

## **Signing in of guests to Clubhouse facilities**

## **Golf Canada Handicap services**

## **No voting privileges**

## **Entrance Fee Discount Plan:**

If an associate member wants to become a shareholder or intermediate shareholder (up to 34 years old) at a future date, we have a unique shareholder entrance fee discount plan. This plan enables associates to earn a 5% discount, per year of membership, off the entrance fee to a max savings of 50%. Should you have any inquiries, please contact the General Manager at 780-973-2200.



# Unattached Senior

**Must be 65 years of age or older**

**Full booking and playing privileges on weekdays**

You will have full access to all tee times available Monday to Friday (Weekends & Holidays excluded).

**Use of all Clubhouse facilities**

Pro Shop, Locker Room, Valley Lounge, 10th Tee Snack Bar.

**Signing in of guests to Clubhouse facilities**

**Golf Canada Handicap services**

**No voting privileges**





# Spousal & Dependents

## Spousal

### Shareholder Spouse / Intermediate Shareholder Spouse / Associate Spouse / Unattached Senior Spouse

Same booking and playing privileges as per Shareholder / Intermediate Shareholder / Associate / Unattached Senior members.

### Use of all Clubhouse facilities

Pro Shop, Locker Room, Valley Lounge, 10th Tee Snack Bar.

### Signing in of guests to Clubhouse facilities

### Golf Canada Handicap services

### No voting privileges.

## Dependents

### Junior of Shareholder / Junior of Associate

Children 6 to 21 years of age as of April 15th of the current year are eligible to play as dependents. Privileges are as follows:

- a) Son/daughter 19-21 years of age - Use of golf course:  
 Weekdays: full access , Weekends/Holidays: assigned by lottery, based on priority  
 Use of all Clubhouse facilities & Golf Canada Handicap services
- b) Son/daughter 10-18 years of age - Use of golf course:  
 Access to the golf course after 10:00 a.m. Monday through Friday, after 2:00 p.m. on Saturdays, Sundays, Statutory Holidays and in specified Board events. Use of all Clubhouse facilities & Golf Canada Handicap services
- c) Son/daughter 6-9 years of age - Use of golf course: (Must be accompanied by an adult)  
 Access to the golf course with an adult, Monday through Friday after 4:00 p.m. and after 2:00 p.m. on Saturdays, Sundays, Statutory Holidays and in specified Board events.



# Intermediate

**Member 23 to 29 years** of age inclusive.

**Member 19 to 22 years of age as of September 1** of the current year who is in full time attendance at school, university or college. No introduction of Junior guests outside Junior tee times.

**Full booking and playing privileges on weekdays**

You will have full access to all tee times available Monday to Friday. On weekends and statutory holidays, tee times will be assigned by lottery, based on priority.

**Use of all Clubhouse facilities**

Pro Shop, Locker Room, Valley Lounge, 10th Tee Snack Bar.

**Golf Canada Handicap services**

**Entrance Fee Discount Plan:**

If an intermediate member wants to become a shareholder or intermediate shareholder (up to 34 years old) at a future date, we have a unique shareholder entrance fee discount plan. This plan enables associates to earn a 5% discount, per year of membership, off the current entrance fee to a max savings of 50%. Should you have any inquiries, please contact the General Manager at 780-973-2200.

# Junior

**Member 10 to 18 years of age** - Use of golf course:

Access to the golf course after 10:00 a.m. Monday through Friday, after 2:00 p.m on Saturdays, Sundays, Statutory Holidays and in specified Board events.

**Use of all Clubhouse facilities**

Pro Shop, Locker Room, Valley Lounge, 10th Tee Snack Bar.

**Golf Canada Handicap services**



# 2025 Fee Schedule

	<u>Dues</u>	<u>Capital</u>
Shareholder	\$4145	+ \$400
Shareholder Spouse	\$3100	+ \$300
Intermediate Shareholder (up to 34)	\$3545	+ \$300
Intermediate Shareholder Spouse	\$3105	+ \$200
Associate	\$5200	+ \$400
Associate Spouse	\$3795	+ \$300
Unattached Senior Associate (65+)	\$3930	+ \$300
Unattached Senior Associate Spouse (65+)	\$2845	+ \$200
Intermediate (19-22)	\$1935	+ \$300
Intermediate (23-25)	\$2420	+ \$300
Intermediate (26-29)	\$2895	+ \$300
Junior (10-18)	\$900	
Junior of Shareholder (6-9)	Free	
Junior of Shareholder (10-13)	\$540	
Junior of Shareholder (14-18)	\$660	
Junior of Shareholder (19-21)	\$1075	
Junior of Associate (6-9)	Free	
Junior of Associate (10-18)	\$785	
Junior of Associate (19-21)	\$1260	

*Prices listed above do not reflect GST*



# 2025 Fee Schedule

## **\$350 Annual Minimum Food & Beverage Spend**

- Members, and spouses who are members are subject to an Annual Minimum Food & Beverage Spend.
- Ages 21 and under as of August 31 of the calendar year are exempt.
- Does not include GST nor gratuities.
- Any unused portion of the Minimum Spend will be charged to the Member's account on November 30 annually.

## **Optional Fees:**

Storage & Pull Cart Adult	\$360
Driving Range Adult	\$550
Storage & Range Combo Adult (Best Value) *Pull cart and full locker included	\$585
Storage & Pull Cart Junior	\$305
Driving Range Junior	\$440
Storage & Range Combo Junior (Best Value) *Pull cart included	\$475
Pull Cart Only	\$175
Large Punch Card Driving Range (20)	\$300
Medium Punch Card Driving Range (20)	\$225
Small Punch Card Driving Range (20)	\$165
Full Locker	\$78
Half Locker	\$50

*Prices listed above do not reflect GST*



# 2025 Fee Schedule

## Member Power Cart Packages

<b>20 @ 9 Hole Member Seat</b>	<b>\$320</b>
<b>40 @ 9 Hole Member Seat</b>	<b>\$600</b>
<b>20 @ 18 Hole Member Seat</b>	<b>\$460</b>
<b>40 @ 18 Hole Member Seat</b>	<b>\$880</b>
<b>60 @ 18 Hole Member Seat</b>	<b>\$1260</b>
<b>80 @ 18 Hole Member Seat</b>	<b>\$1600</b>
<b>100 @ 18 Hole Member Seat</b>	<b>\$1900</b>

*Prices listed above do not reflect GST*



# Rules and Etiquette

## General Rules

- Only members in good standing, their families and registered guests are eligible to use the facilities of the Club.
- Conduct or behavior to the embarrassment of other members, or staff will not be tolerated.
- Members and guests are responsible for the safety of their children. Children under ten years of age are not allowed on the golf course except for special events designated by the Board
- Lockers will be allocated upon payment of the locker rental fee at the office. Club storage is available through the Pro Shop. **\*\*The Club will not be responsible for golf clubs or equipment left or stored at the Club.** Members should ensure that they have adequate personal insurance coverage for all such articles and equipment.
- All personal property belonging to members except, clubs and carts, must be kept in lockers. Please do not store articles of any nature on top of the lockers or on the floor.
- Pets are not permitted in any area of the Club under any circumstances.
- Members are not permitted access to the kitchen or behind bar areas.
- Members are not permitted to discuss Club business, reprimand or interfere with any staff member. Any complaint should be presented to the Board of Directors in writing. All complaints are to be signed and will be answered.
- Alcoholic beverages are allowed on the golf course when purchased from the Club. Alcoholic beverages are not allowed in the locker rooms.
- Clubhouse hours are set at the discretion of the General Manager. Alcoholic beverages will be served only during those hours established and with due consideration to the liquor permit. The General Manager and bar staff have the authority to refuse alcoholic beverage service of any type, including cannabis.
- Smoking is not allowed in any area of the Clubhouse or Pro Shop.
- All meals, provisions and refreshments, used or served in the club or on the premises, must be obtained from the club.
- SVGCC is a cannabis smoke free zone. The smoking and vaping of cannabis will not be allowed anywhere on club property.



# Rules and Etiquette

## Dress Code

The members of Sturgeon Valley Golf & Country Club welcome you to the Club and trust you will enjoy our course and Club facilities. We ask that you help us to build and preserve the great game of golf by maintaining an acceptable standard of dress at all times on Club property. By this we mean:

### Men and Junior Men's Attire

- Tailored slacks or shorts.
- Collared shirts (including crew and turtleneck) with sleeves.

### Ladies and Junior Ladies Attire

- Tailored slacks, skirts or shorts.
- Sleeveless tops should have a collar and tops without collars should have sleeves.

### General

- Minimum length shorts for men and shorts/skirts for women should be approximately mid-thigh.
- Clothing must be neat, clean and presentable
- The club acknowledges that golf fashions change over time, and the Dress Code recognizes that any recognizable golf attire is acceptable attire.

### Prohibited Dress

- Athletic or team jerseys and workout clothing (including but not limited to gym/jogging shorts, cutoffs, sweatpants/shorts and track suits).
- T-shirts, tank tops, halter tops, spaghetti straps and tops with objectionable print, symbols and/or cartoon caricatures.
- Denim of any color is not allowed on the golf course.



# Rules and Etiquette

## Etiquette

- Play ready golf. An average round should take 4 hours and 10 minutes or less.
- All golf games must start from the 1st tee unless otherwise authorized by the staff in the Pro Shop.
- Slow players and players looking for lost balls must allow following players to play through.
- Players must always ensure there is no damage to putting surfaces from their equipment or flagsticks. Due care should be used when replacing the flagstick in the cup.
- When the play of the hole has been completed, players should immediately leave the putting green and record scores at next tee box.
- Rake sand traps, fix your ball mark and another one on greens and replace all divots on the fairway.
- All power and pull carts must be kept away from tees, greens and green aprons.
- Do not play a shot until the players in front of you are out of your range.
- Please place all trash in containers. Let's keep our course clean.





# Rules and Etiquette

## Player Assistants & Starters

The player assistants and starter are responsible for the following:

- The protection of all property, including greens, fairways, tee boxes, buildings, equipment, etc.
- Monitoring the speed of play to ensure rounds are played within the four (4) hour range or less.
- Ensuring all players conduct themselves within the acceptable rules governing conduct and etiquette.
- Players leave the 1st tee in a timely fashion and are versed in their golf course responsibilities.

## Slow Play

The Board of Directors has established the following objectives for playing time maximums:

- Four (4) hour rounds and ten (10) minutes of golf.
- Play ready golf (be ready to play your shot without delay).

Some helpful hints for ready golf:

- Reduce the number of practice swings on the course.
- Take your cart or clubs to a point where you won't have to walk back and get them after you are finished playing the hole. This is particularly useful on Par 3 and 5 holes.
- Putt when ready and continuously putt when able (once you start putting - finish). Read your putt while others are putting.
- Your objective is not to stay immediately in front of the group behind you, but to stay immediately behind the group in front of you.
- If you must search for a lost ball, ensure that the following group is not held up.



# Pro Shop Services

## Club Cleaning and Storage

During the golf season, members' clubs may be stored in the club storage area at a fee determined by the Golf Club. This service will include cleaning, storing and use of a pull cart for the season.

## Practice Range

- The practice range is operated by the Golf Club. A yearly pass, punch card or individual buckets of range balls may be purchased through the Pro Shop. The practice range typically closes one hour prior to sunset.
- Practicing is allowed from the designated teeing area only. Practicing on any other part of the golf course is strictly forbidden.
- Children under ten (10) years of age may use the practice area under the direct supervision of an adult.

## Starting Regulations

- All golf games must start from the first tee unless otherwise authorized by the Pro Shop.
- Each group must check with the starter/Pro Shop before teeing off.
- All members are encouraged to book tee times in advance. Any single players wishing to play will be placed with a twosome or threesome if possible.
- Persons failing to show for booked tee times without advising the starter/Pro Shop in advance may have booking privileges revoked.
- The Golf Professional may grant exceptions to the above starting regulations.



# Pro Shop Services

## Power Carts

- Power carts are the property of the Club and may be rented through the Pro Shop.
- Junior members are not permitted to rent or drive power carts.
- The Course Superintendent, Golf Professional or the Greens Committee of the Board may forbid the use of power carts when adverse conditions exist on the course.
- Power carts must follow paths and be confined to areas as set out by the Course Superintendent. All carts must be kept well away from tee boxes, greens and approaches to greens.



# Food and Beverage Services

- Alcoholic beverages will be served to members and guests in the licensed portions of the Club and Course and in accordance with the Liquor Control Act. This Act gives staff members the authority to assess the condition of any patron and to deny further service if appropriate.
- Service of alcoholic beverages to any person under 18 years of age is not permitted.
- Bar Service:  
Monday to Sunday & Holidays  
10:00 am to 2:00 am  
maximum hours
- Food Service:  
Weekdays 11:00am to 10:00 pm\*  
Weekends 10:00 am to 12:00 midnight\*

\*Hours are subject to change



# Member Billing & Payment

## Billing Process

Shareholder annual dues & fees are billed in December. Billing is based on the member's information that the accounting office has on file from the prior year. Changes to spousal or dependents from your membership can be communicated to the accounting office. Dues are payable by **February 15th**. Late payment of Shareholder Dues will incur a late payment penalty of \$200.00

## Monthly Statements

Statements of your accounts along with the chit receipts will be emailed at the beginning of each month. Payment is due within 30 days of the statement date. Accounts overdue will incur a 2% interest charge each month until payment is up to date. You may access your statement anytime through our website or by contacting the accounting office.

## Payment

Account payments can be made by cash, cheque, debit/credit card, online payment or e-transfer. (Credit card payments for annual **Dues Only** will incur a 2.4% administration fee)





# MEMBERSHIP APPLICATION

Please Email Application To Jordan Dekens  
[jordan.dekens@sturgeonvalleygolfclub.com](mailto:jordan.dekens@sturgeonvalleygolfclub.com)

**First Name:** \_\_\_\_\_ **Surname:** \_\_\_\_\_

**Address:** \_\_\_\_\_ **Postal Code:** \_\_\_\_\_

**City:** \_\_\_\_\_ **Province:** \_\_\_\_\_

**Phone:** \_\_\_\_\_ **Alt. Phone:** \_\_\_\_\_

**Email:** \_\_\_\_\_

**Interested Membership:** \_\_\_\_\_

**(Shareholder, Associate, Etc.)**

*Thank you so much for your interest in our Club. We hope this package was informative, and should you require anything further, please feel free to contact our General Manager.*

*- Sturgeon Valley Golf & Country Club*

[sturgeonvalleygolfclub.com](http://sturgeonvalleygolfclub.com)

*Where Friends Meet  
and Friendships Grow*

